



# CONSERVATION TODAY

Sibley Soil and Water Conservation District & USDA

Winter 2020



## 2019 Conservationist of the Year

Ryberg Farms, Inc., located 2 miles South of Buffalo Lake, have been selected as the 2019 Sibley Soil and Water Conservation District Conservationist of the Year. Though their six children and community involvement keep them plenty busy, they still find time to grow over 5,000 acres of corn, soybeans, and sugar beets. Ryberg Farms were early adopters of cover crops and strip till in a conventional farming dominated area. They have become true leaders of soil health in the community and county, having hosted several very successful field days at their farm. Being involved in the Conservation Stewardship Program, Ryberg Farms have



improved nutrient and pest management application techniques as well as widened their buffers. Ryberg Farms are stewards of the land and Sibley SWCD would like to thank them for their conservation efforts!

Brian and Sandy Ryberg



### Sibley SWCD

Joel Wurscher,  
District Manager

Jeremy Buckentin,  
District Technician

Jack Bushman,  
Conservation Technician  
Ron Otto, Water Planner

Eric Miller,  
Farm Bill Technician

### SWCD Board

Kathleen Thies - District 1  
Paul Wiemann - District 2  
Loren Evenson - District 3  
Wayne Grams - District 4  
Robert Nielsen - District 5

### Board Meetings

Second Tuesday of  
Each Month  
4 p.m., SWCD Office

### USDA - NRCS

April Sullivan,  
District Conservationist

Katelyn Mattila,  
Soil Conservationist



### Office Hours

Monday - Friday  
8 a.m. - 4:30 p.m.



### EQIP (Environmental Quality Incentive Program)



From weather to pests, each American farmer faces a unique set of challenges. The Environmental Quality Incentives Program (EQIP) provides financial and technical assistance to agricultural and forestry producers to address natural resource concerns and deliver environmental benefits such as improved water and air quality, conserved ground and surface water, reduced soil erosion and sedimentation, and improved or created wildlife habitat.

Apply at your local USDA Service Center. Applications for EQIP financial assistance are accepted throughout the year. Specific state deadlines are set for ranking and funding. If your application is ranked and selected, you will enter into a contract with NRCS to receive financial assistance towards the cost of implementing conservation practices.

For more information stop in at the Gaylord office or call 507-237-5435.



# Productive Soils: A Great Sibley County Resource

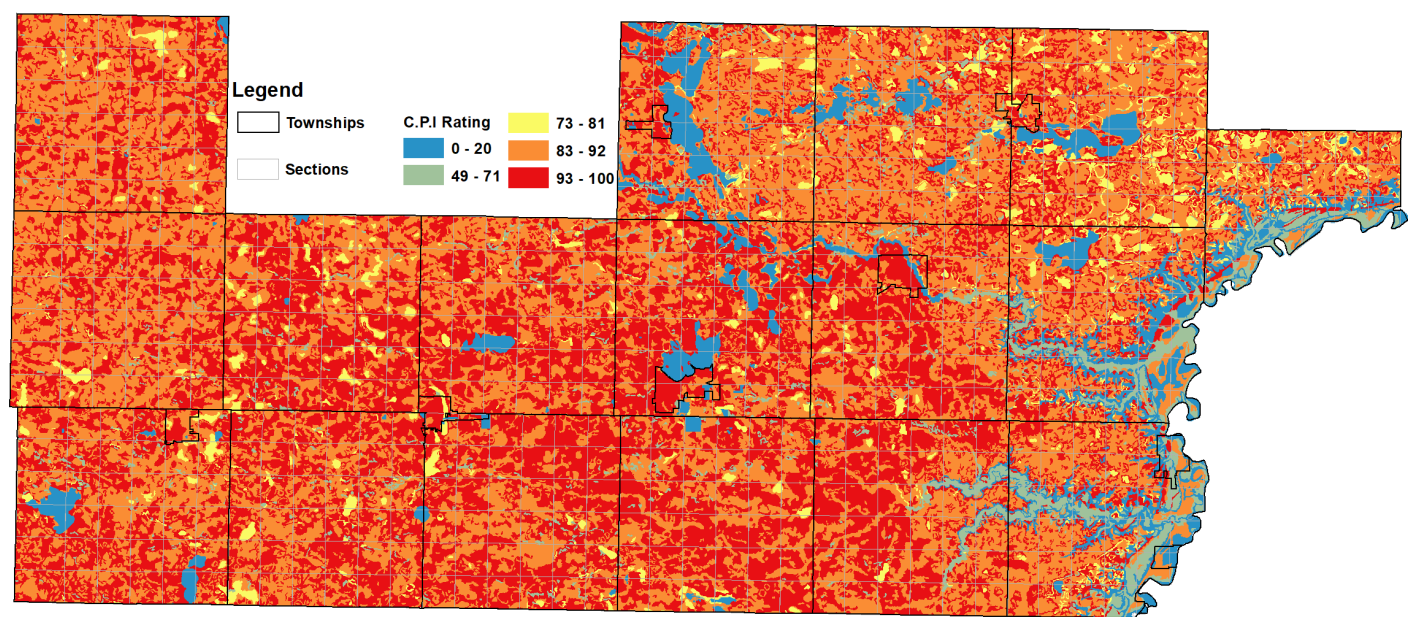
By Jeremy Buckentin—District Technician

According to the Natural Resources Conservation Service's (NRCS) Crop Productivity Index (CPI) rating, 50% of the soils in Sibley County have a CPI rating of 93 or higher out of 100. CPI ratings provide a relative ranking of soils based on their potential for crop production and yields. Soils are rated on a standard set of assumptions such as management, natural weather conditions, and adequate artificial drainage. In general, the higher the score the better the soil can deliver in terms of yields. In fact, over 91% of Sibley County has a CPI score of 83 or better, making it one of the best producing counties in the state!

Great crop production has become standard, however, it has come at a cost to local soil health. The loss of topsoil, organic matter, and nutrients are devastating in terms of crop production and can be equally negative on streams, rivers, wetlands, and lakes. On average, 1.6 tons/acre of soil is lost through erosion on Sibley Counties most productive soils every year (CPI: 93-100) . To combat this, landowners and operators are turning to best management strategies to help control soil erosion while still producing great crops.

Cover crops, drainage water management, strip-till systems, no-till systems, CRP programs, and erosion control structures are on the front lines in the fight against soil loss. Each has a specific purpose, that when utilized properly, can be extremely effective in preserving Sibley County soils. Planning is the first step for land managers looking to reduce their soil loss. Staff at the Sibley SWCD, as well as the USDA-FSA/NRCS offices, can help provide free technical assistance to address many resource concerns, including soil erosion. Financial assistance programs are also available to landowners and operators who would like assistance with installing and/or transitioning into a more sustainable agricultural management system. Contact the Sibley SWCD at 507 702 7077 and the USDA Service Center at (507)237-5435.

The soils of Sibley County are truly a great resource that, with proper management, can be conserved for future generations and for agricultural success!



Map: Sibley County Crop Productivity Rating





## A Conservation Story: Before and After

For the past several years Dave Evans, a local beef producer, has been hard at work transforming his land toward a rotational grazing system for his cow/calf operation. Utilizing the USDA-NRCS EQIP program for financial assistance towards the installation of fencing, livestock pipelines, watering tanks and seed; Dave is now set up to complete prescribed grazing on 53.6 acres of his land year after year. Furthermore, Dave was also able to replace a failing grade stabilization structure (as seen in the picture) in the heart of his acreage with the help of the Sibley SWCD and their cost share program. The erosion control structure was installed at a key position between several rotational grazing paddocks along the head of an erosive ravine. The structure was also modified from a traditional earthen embankment to a gravel armored, 12' wide cattle walkway. This type of modification not only maintains the traditional erosion control capabilities of the embankment, but it also allows Dave to move his herd quickly when needed for his rotational grazing. This conservation combination is a fitting example of how a producer, the USDA-NRCS, and the Sibley SWCD can all work together to reach a common goal of conservation in Sibley County. For more information on how the Sibley SWCD or USDA-NRCS can assist you with your conservation needs, please call 507-702-7077 (Sibley SWCD) or 507-237-5435 (USDA-NRCS).



## Keeping (Aquatic Invasive Species) AIS in Mind

Now is a time of transition for all of those who enjoy the outdoors. Some of you may still be breaking ice to get out to the duck blind, or maybe getting the ice house prepared so that you can try your favorite fishing hole once the ice thickens. Even though this isn't a time of year that strikes a person as a time when AIS could be transferred, there are still many pathways possible throughout your outdoor adventures. In Sibley County, waterfowl hunters are identified as the highest potential pathway to transfer AIS "hitchhikers". Here are a few things you can do to stop the spread of AIS when waterfowl hunting:

- Clean your watercraft, waders, trailer, motor, and equipment. Remove visible plants and mud before leaving the access.
- Pull your plug and drain water from your watercraft, decoys, bags and motor.
- Dry everything for at least five days before heading out and hunting other waters. This may require using a different set of decoys/gear if unable to wait until everything is fully dry.

Every year, millions of live fish are harvested from the wild, moved overland to retail stores, and sold for use as live bait by recreational anglers. If you have been fishing in the fall, chances are you were using the old standby of a jig and a minnow. However, did you know that it is illegal to release unused bait into a body of water? Here are a few things you can do to stop the spread of AIS while fishing:

- Make sure to dispose of unwanted bait in the trash and drain the bait buckets you are using. Some infectious diseases and smaller AIS have been known to hitchhike from one lake to another by travelling in contaminated bait water.
- When ice fishing, check your ice auger and other gear to make sure it is clear of any vegetation. Some aquatic vegetation can stay viable during winter months and frozen temps, and survive frozen temps.
- Look at the origin of your bait. Even if it is dead or frozen, it could still be infected with exotic viruses.



# Windbreak/Shelterbelt Renovation Strategy

As a windbreak or shelterbelt ages, often it becomes necessary to thin and sometimes replace rows of trees to maintain its proper function.

## 1. To Begin:

- ◆ Sketch out your current shelterbelt layout including the total available space, the spacing dimensions within/between rows, as well as tree species and note each row's overall condition.

## 2. Formulate a Plan:

- ◆ Using the Shelterbelt Layout Strategy, identify any rows that may be renovated through the use of pruning, row removal & replacement, thinning and plan for any new rows that may fit into your current stand.

## 3. Set a timeline

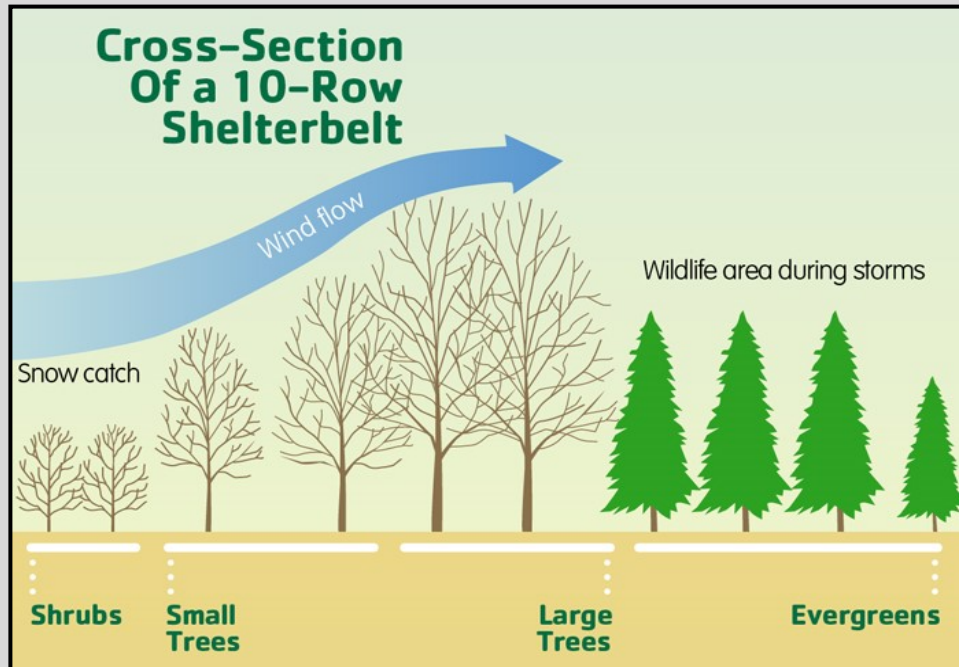
- ◆ Renovating 1-2 rows every 3 - 5 years will help you maintain some wind protection while allowing newly established rows to gain in height.

## 4. Implement the plan:

- ◆ The best time for site preparation is in mid-late fall. Trees are dormant so any trimming won't damage the trees and rows you hope to keep!
- ◆ Also consider what will become of the trees you may be cutting down. (Firewood, mulch, or lumber)

## 5. Don't forget to order trees!

- ◆ The Sibley SWCD offers a yearly tree program aimed at providing low cost tree seedlings for windbreak establishment and renovation.



## 10 Row Shelterbelt Layout Strategy (136' - 180')

### Rows 1-2—Shrubs

- ◆ Plant 4-5' apart within row. Space 10-15' between row. (Lilac, Dogwood, Flame Willow, Serviceberry)

### Rows 3-4—Tall Shrub/Medium Tree

- ◆ Plant 5-8' apart within row. Space 10-15' between rows (Am. Plum, Elderberry, Hazelnut)

### Rows 5-6—Tall Deciduous Tree

- ◆ Plant 10-16' apart within row. Space 16-20' between rows. (Walnut, Poplar, Maple, Oak)

### Rows 7-8—Tall Conifer (evergreen)

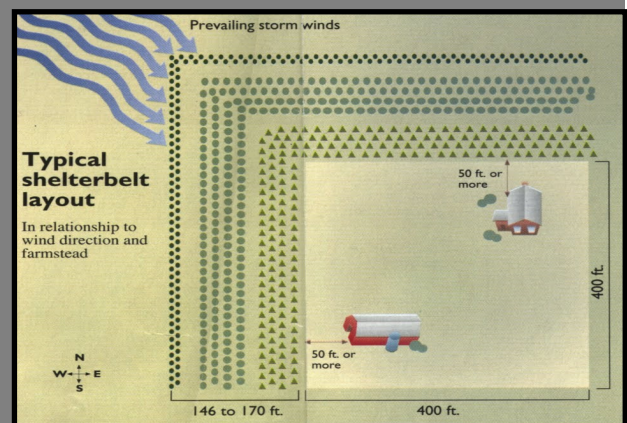
- ◆ Plant 10-16' apart within row. Space 16-20' between rows. (Pines, Norway Spruce)

### Rows 9-10—Medium Conifer (evergreen)

- ◆ Plant 10-16' apart within row. Space 16-20' between rows. (Black Hills Spruce, Arborvitae)

## Smaller Windbreak Layout Strategies

# of Rows	Width	Best Combination
6 Rows	78' - 110'	1,2,3,7,8,9 or 1,3,5,7,8,9
5 Rows	68' - 100'	1,3,7,8,9 or 1,2,4,7,8
4 Rows	58' - 90'	1,2,7,8 or 1,4,7,8
3 Rows	48' - 80'	1,7,8 or 7,8,9







# 2020 TREE PROGRAM

## ORDER FORM

(office use only)

ORDER #

Name:

Address:

City:

Zip:

Phone:

Email:

Would you like to receive emails regarding our yearly newsletters and tree order forms? **YES / NO**

### 2020 UPDATES:

Please ensure to include taxes with your order total on page 2.

**TREE ORDER DEADLINE: MARCH 30TH, 2020 —> PLEASE CALL FOR AVAILABILITY AFTER DEADLINE.**

### INDIVIDUAL POTTED CONIFERS

Type	Species	Size	Price	Type	# of Pots	Total (\$)
<b>1 QUART CONIFERS</b>	Black Hills Spruce	1 Quart- 8" to 12"	\$ 5.00	Single Pot	<input type="text"/>	\$ <input type="text"/>
	Colorado Spruce	1 Quart- 8" to 16"	\$ 5.00	Single Pot	<input type="text"/>	\$ <input type="text"/>
	Norway Spruce *NEW*	1 Quart- 10" to 20"	\$ 5.00	Single Pot	<input type="text"/>	\$ <input type="text"/>
	White Pine	1 Quart- 5" to 8"	\$ 5.00	Single Pot	<input type="text"/>	\$ <input type="text"/>
	Red Pine	1 Quart- 5" to 10"	\$ 5.00	Single Pot	<input type="text"/>	\$ <input type="text"/>
	Scotch Pine	1 Quart- 6" to 12"	\$ 5.00	Single Pot	<input type="text"/>	\$ <input type="text"/>
	American Arborvitae	1 Quart- 6" to 12"	\$ 5.00	Single Pot	<input type="text"/>	\$ <input type="text"/>
<b>2 GALLON CONIFERS</b>	American Arborvitae	2 Gal.- 18" to 24"	\$ 16.00	Single Pot	<input type="text"/>	\$ <input type="text"/>
	Black Hills Spruce	2 Gal.- 18" to 24"	\$ 16.00	Single Pot	<input type="text"/>	\$ <input type="text"/>
	Colorado Spruce	2 Gal.- 18" to 24"	\$ 16.00	Single Pot	<input type="text"/>	\$ <input type="text"/>

### BUNDLES OF 25 BARERoot DECIDUOUS SEEDLINGS

Type	Species	Size	Price	Type	# of Bundles	Total (\$)
<b>LARGE TREES</b>	Black Walnut	12" to 18"	\$ 35.00	Bundle of 25	<input type="text"/>	\$ <input type="text"/>
	Norway Poplar	18" to 24"	\$ 35.00	Bundle of 25	<input type="text"/>	\$ <input type="text"/>
	Sugar Maple	18" to 24"	\$ 35.00	Bundle of 25	<input type="text"/>	\$ <input type="text"/>
	Red Maple	18" to 24"	\$ 35.00	Bundle of 25	<input type="text"/>	\$ <input type="text"/>
	Swamp White Oak	18" to 24"	\$ 35.00	Bundle of 25	<input type="text"/>	\$ <input type="text"/>
	Red Oak	18" to 24"	\$ 35.00	Bundle of 25	<input type="text"/>	\$ <input type="text"/>
<b>SMALL TREES</b>	Elderberry	12" to 18"	\$ 35.00	Bundle of 25	<input type="text"/>	\$ <input type="text"/>
	Prairie Red Plum	12" to 18"	\$ 35.00	Bundle of 25	<input type="text"/>	\$ <input type="text"/>
	American Hazelnut	12" to 18"	\$ 35.00	Bundle of 25	<input type="text"/>	\$ <input type="text"/>
<b>SHRUBS</b>	Common Lilac	18" to 24"	\$ 35.00	Bundle of 25	<input type="text"/>	\$ <input type="text"/>
	Serviceberry	12" to 18"	\$ 35.00	Bundle of 25	<input type="text"/>	\$ <input type="text"/>
	Red Osier Dogwood	18" to 24"	\$ 35.00	Bundle of 25	<input type="text"/>	\$ <input type="text"/>
	Nannyberry	12" to 18"	\$ 35.00	Bundle of 25	<input type="text"/>	\$ <input type="text"/>
	Flame Willow	12" to 18"	\$ 35.00	Bundle of 25	<input type="text"/>	\$ <input type="text"/>

Sibley SWCD Phone:507-702-7077

Tree Order Totals \$

112 5th Street, PO Box 161, Gaylord, MN 55334

(continued on back page)

Page 1 of 2



# 2020 TREE PROGRAM

## ORDER FORM

### Native Plant Kits

Use these kits to accent your gardens, landscaping, or to create your own custom wildlife habitat!  
Each kit will contain 36 nursery selected live plants consisting of 6 species from the listed varieties.

\*Final kit species are based on nursery availability. Individual Cell Size: 2" x 2.25" x 3.25"

**PLANT KIT ORDER DEADLINE: APRIL 30TH, 2020**

### Native Plant Kits - 36 Plants

Plant Kit Name & Potential Plant Varieties	Preference	Price	Quantity	Total (\$)
<b>*Pollinator Plant Kit:</b> <u>Grasses:</u> Little Bluestem, Prairie Dropseed, Sideoats Grama <u>Forbs:</u> Anise Hyssop, Butterfly Milkweed, Prairie Coreopsis, Showy Goldenrod, Purple Prairie Clover, Sky Blue Aster, Meadow Blazingstar, Purple Coneflower	Partial to Full Sun	\$60.00 per Kit		\$
	Variety of Soils			
	Plant in 12-18" Spacing			
<b>*Rain Garden/Lakeshore Plant Kit</b> <u>Rush/Sedges:</u> Porcupine Sedge, Bebb's Sedge, Common Rush <u>Forbs:</u> Marsh Milkweed, Blue Flag Iris, New England Aster, Great Blue Lobelia, Cardinal Flower, Culvers Root, Stiff Goldenrod, Blue Vervain.	Partial to Full Sun	\$60.00 per Kit		\$
	Poorly Drained Soils			
	Plant in 12-18" Spacing			
<b>*Songbird Plant Kit:</b> <u>Grasses:</u> Big Bluestem, Indian Grass, Switch Grass <u>Forbs:</u> Stiff Goldenrod, Purple Coneflower, Rough Blazingstar, Yellow Coneflower, Meadow Blazingstar, Cup Plant, Smooth Blue Aster, Smooth Penstemon	Partial to Full Sun	\$60.00 per Kit		\$
	Variety of Soils			
	Plant in 12-18" Spacing			
Prairie Plant Kit Total				\$

### Planting Materials

Item	Description	Price	Quantity	Total (\$)
Pre-Cut Tree Square	3' x 3' fabric mat with staples	\$1.75 ea		\$
Fabric Roll Mat	3'x300' fabric roll with staples	\$110.00 ea		\$
Grow Tube Kit	4 foot grow tube, stake and zip ties	\$6.00 / kit		\$
<b>Materials Totals</b>				<b>\$</b>

### Order Totals

#### Notice

Payment is due in full at time of order, no refunds for orders cancelled after February 26, 2020. Plant availability and sizes are subject to change. Tree's & Planting Materials will be available near the end of April 2020. Plant Kits will be available in mid-May 2020; You will be notified of your pickup day and time for your order as selected under "Terms and Agreement".

Tree Order Totals	\$
Plant Kit Totals	\$
Materials Totals	\$
<b>SUB TOTAL</b>	<b>\$</b>
<b>SALES TAX 6.875%</b> (sub total x 0.06875)	<b>\$</b>
<b>TOTAL DUE</b> (sub total + sales tax)	<b>\$</b>

#### Terms and Agreement:

I acknowledge that the Sibley SWCD cannot be responsible for the condition in which the nursery stock arrives, the stock's condition beyond my scheduled pickup date(s) and that the SWCD reserves the rights to substitute different stock for damaged, unsuitable or lack of sufficient quantities received from the nursery.

I would like to be notified by Mail \_\_\_\_\_ Email \_\_\_\_\_ of my scheduled pickup dates.

Signature \_\_\_\_\_ Date: \_\_\_\_/\_\_\_\_/\_\_\_\_





# **Sibley SWCD 2020 Tree Program**

The Sibley Soil and Water Conservation District (SWCD) will offer its 2020 Tree Program open house on **Wednesday, February 19, 2020**. The SWCD will be on hand to offer technical assistance on trees and shrubs for shelterbelts, field windbreaks, wildlife habitat, and reforestation. Selected plant varieties are suited to the climate conditions and soils of Sibley County. Technical information regarding planting design and species selection are available at the District office.

Trees offered through the program are available at affordable prices (see price list on page 5 and 6). A mechanical tree planter is available (free of charge) for larger plantings; contact Jeremy (507) 702-7077 for more information. **Orders will be accepted while supplies last.** Please read the **terms and conditions** below before placing your order.

## **Sibley SWCD Terms and Conditions**

- The Sibley SWCD is not responsible for the survival or condition of the stock once received.
- There will be no refunds on cancelled orders after **February 26**.
- Full payment must be made at the time when the order is made.
- The District reserves the right to substitute varieties or sizes, depending on stock availability.
- Trees may be ordered until **Monday, March 30th, 2020**.
- Tree pick-up days are tentatively scheduled for **Thursday, April 23 or Friday, April 24**, between 8 am and 5 pm.
- Native plant kits may be ordered until **Thursday, April 30th, 2020**.
- Plant kit pick-ups will be scheduled for **mid-May**.
- Customers will be notified by postcard or email where and when their stock is to be picked up.



**Tree Day**  
**Open House**  
Thursday,  
February 19, 2020  
9 a.m. - 4 p.m.  
Sibley County USDA  
Service Center  
112 5th Street  
Gaylord, MN 55334

**Sibley SWCD**  
112 5th St  
PO Box 161  
Gaylord MN 55334

**PRESORTED STANDARD**  
**U. S. POSTAGE PAID**  
**GAYLORD MN 55334**  
**PERMIT NO. 61**



## **SIBLEY SOIL AND WATER CONSERVATION DISTRICT**

### **Upcoming Dates:**

December 24, 2019.....Christmas Eve Day (Office Closed)  
December 25, 2019.....Christmas Day (Office Closed)  
January 1, 2020.....New Years Day (Office Closed)  
January 14, 2020.....Sibley SWCD Board Meeting  
January 20, 2020.....MLK Day (Office Closed)  
February 11, 2020.....Sibley SWCD Board Meeting  
February 19, 2020.....Sibley SWCD Tree Day

**Conservation Today** is published by the Sibley Soil and Water Conservation District and USDA—NRCS  
112 5th St, Gaylord MN 55334. For more information regarding this newsletter, contact (507) 702-7077.

**Policy:** The USDA prohibits discrimination in all its programs and activities on the basis of race, color, national origins, sex, religion, age, disability, political beliefs, sexual orientation or marital or family status. (Not all prohibited bases apply to all programs.) Persons with disabilities who require alternative means of communication of program information (Braille, large print, audiotape, etc.) should contact USDA's Office of Communications, (202) 720-2791. To file a complaint of discrimination, write to: USDA Director, Office of Civil Rights, Room 326-W, Whitten Building, 14th and Independence Avenue SW, Washington DC 20250-9410 or call (202) 720-5964 (voice and TDD). USDA is an equal employment opportunity employer.